

RiverStone

in Antioch. . .
near the Antioch Marina.

Just imagine. . .
lush green grass, blue skies,
conveniently located off
of Highway 4.

Just minutes away
from shopping, dining,
entertainment and
Community Parks.

Antioch, California. . .
is the gateway
to the Delta,
located near the
San Joaquin River.



2200 Sycamore Drive
Antioch, CA 94509
925-754-4488
Fax: 925-754-5496

riverstone@usapropfund.com
www.usapropfund.com



RiverStone

APARTMENT HOMES



Welcome



A USA PROPERTIES FUND
COMMUNITY



Interior Amenities:

- Private Balcony or Patio with Sliding Glass Door
- Personal Exterior Storage in Select Units
- Large Closets Throughout Apartment
- Cable-Ready
- Remodeled Kitchens & Spacious Dining Areas
- Frost-free Refrigerator
- Electric Stove
- Dishwasher
- Central Air & Heating System
- Covered Parking
- Sparkling Pool & Spa
- Washer / Dryer in Select Units
- Centrally Located On-Site Laundry Facility

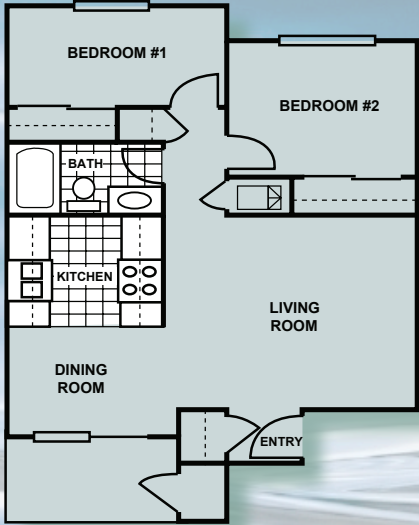
Exterior Amenities:

- Controlled Access Community
- Children's Playground
- Clubhouse with Resident Computer Access
- Monitored Surveillance Cameras



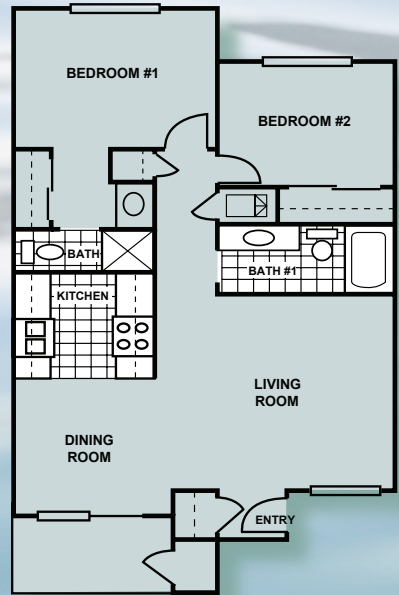
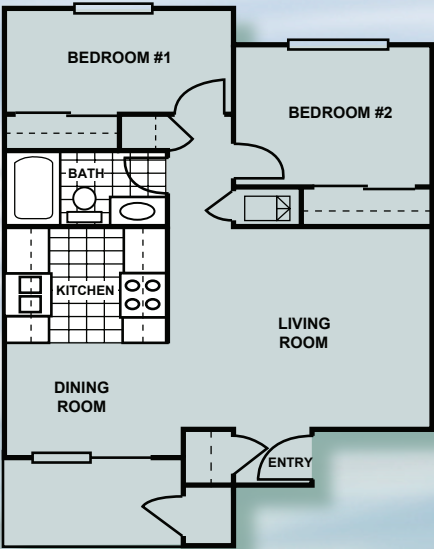
The Meadows

711 Sq. Ft.
2 Bedroom/1 Bath
Rent: _____
Deposit: _____



The Riverbank

755 Sq. Ft.
2 Bedroom/1 Bath
Rent: _____
Deposit: _____



The Delta

843 Sq. Ft.
2 Bedroom/2 Bath
Rent: _____
Deposit: _____

Site Plans and Floor Plans are not to scale. Square footages are approximate. Features may change without notice.